

Hand Valves

A globe pattern valve with a $\frac{7}{16}$ " (11 mm) bore for pressures to 10000 psig (689 barg)

General Application

The HM25D is suitable for severe service, high pressure/temperature applications and features a Cv rating of 1.95, which allows for high flow capacities. Its globe pattern construction allows for throttling of the most severe services.

TECHNICAL DATA

Materials

CS, 316 SS

Seats:

Metal

Connections
Inlet:

$\frac{3}{4}$ " to 1" NPT or socket weld

Outlet:

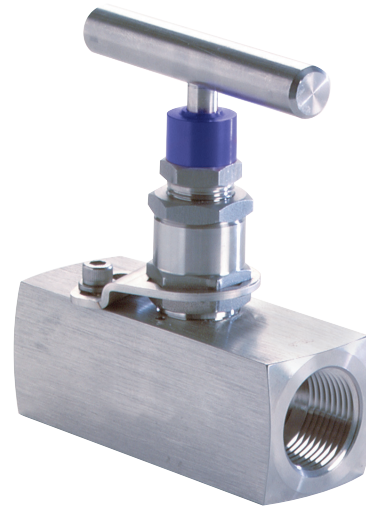
$\frac{3}{4}$ " to 1" NPT or $\frac{1}{2}$ " to 1" socket weld

Pressure (max):

10000 psig (689 barg)

Temperature (min/max):

-70°F to 1000°F
(-56°C to 538°C)



Features

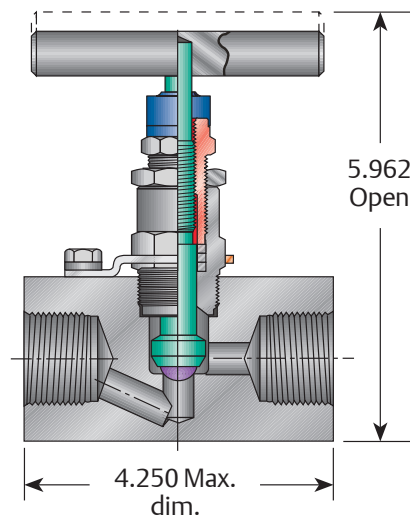
- Rotating ball stem tip provides bubble-tight shutoff and ensures long valve life.
- Large handle ensures ease of operation.
- All valves are hydrostatically tested prior to shipment. Material traceability on all wetted parts is standard.
- PTFE or graphite packing is easily adjustable in the field.
- All packing is below the threads to eliminate contamination by the process, ensure smooth valve operation and long service life.
- Safety back seating prevents accidental stem blowout and removal under pressure.
- Standard bonnet lock plate prevents accidental removal under pressure.
- Wide variety of inlet and outlet configurations and materials.
- Factory configuration to a wide variety of manufacturers' tube fittings.

HM25D SERIES

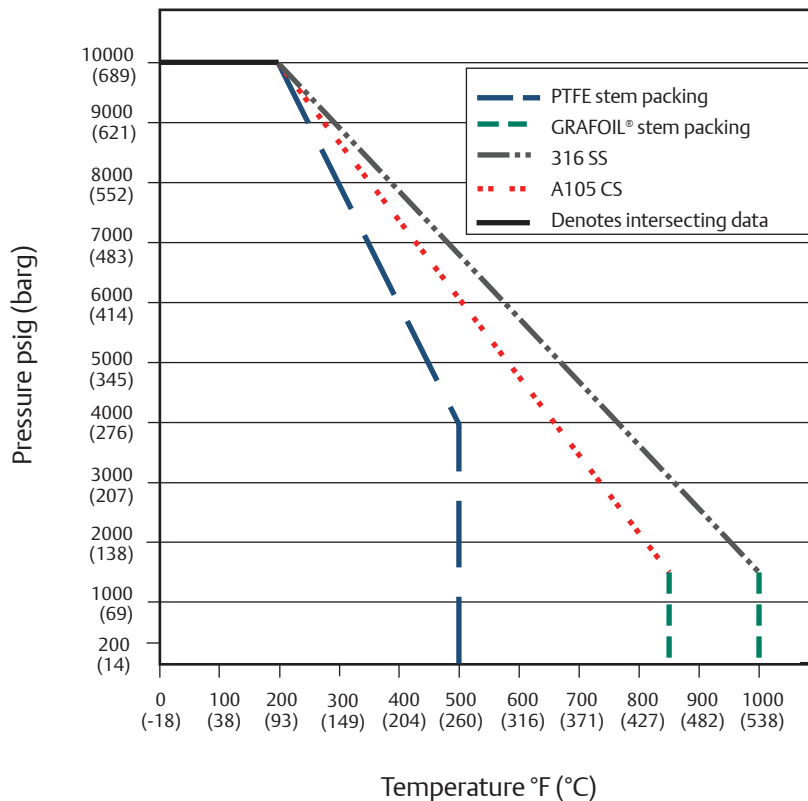
Hand Valves

Bonnet Assembly

The metal-seated bonnet assembly has a strengthened rotating stem with a non-rotating ball stem tip for long service life. The stem threads are machined and lubricated to prevent galling and reduce operating torque. It incorporates adjustable GRAFOIL® packing and back-up pressure rings to ensure a leak-free stem seal as standard, with PTFE packing as an option. The specially hardened ball seat is ideal for both gas and liquid service. A protective dust cap is fitted to contain stem lubricant and prevent the influx of contaminants. All bonnets are assembled with a bonnet lock plate to prevent accidental removal while in service.



Pressure vs Temperature Ratings



Hand Valves

Selection Guide - Power Industry Applications^[1]

| HM25D | S | 8 | PID | H | SG | |
|--|--|--------------------------------------|-------------------|--------------------------------|---|--|
| BASIC SERIES | MATERIALS OF CONSTRUCTION | INLET/OUTLET CONNECTIONS | STEM TIP | PACKING | SPECIAL OPTIONS | |
| HM25D | S SS - 316/316L SS valves meet the requirements of NACE MR0175/ISO 15156 (for chloride conditions ≤ 50 mg/l (ppm)) and NACE MR0103-2005. | Standard threaded connections | | PID Rotating ball tip stem end | V PTFE | SG 316/316L SS valves meet the requirements of NACE MR0175/ISO 15156 (for chloride conditions ≤ 50 mg/l (ppm)) and NACE MR0103-2005. |
| | | 6 | ¾" FNPT x ¾" FNPT | | | |
| | | 66 | ¾" MNPT x ¾" FNPT | | | |
| | C CS - carbon steel (A108CS) | 8 | 1" FNPT x 1" FNPT | H GRAFOIL® | OC00 Cleaned for oxygen service (Gaseous) | SCL Bonnet Lock |
| | | 88 | 1" MNPT x 1" MNPT | | | |
| | | Standard socketweld (pipe) | | | | |
| | | MS66S | ¾" MSW x ¾" FSW | | | |
| | | MS64S | ¾" MSW x ½" FSW | | | |
| | | FS66S | 1" FSW x 1" FSW | | | |
| | | MS88S | 1" MSW x 1" FSW | | | |
| Other construction materials available - consult factory | | | | | | |

NOTE

1. All seats on HM25D Series are integral - no nomenclature designation required.